

## Area Profile: Alport

### Key Characteristics

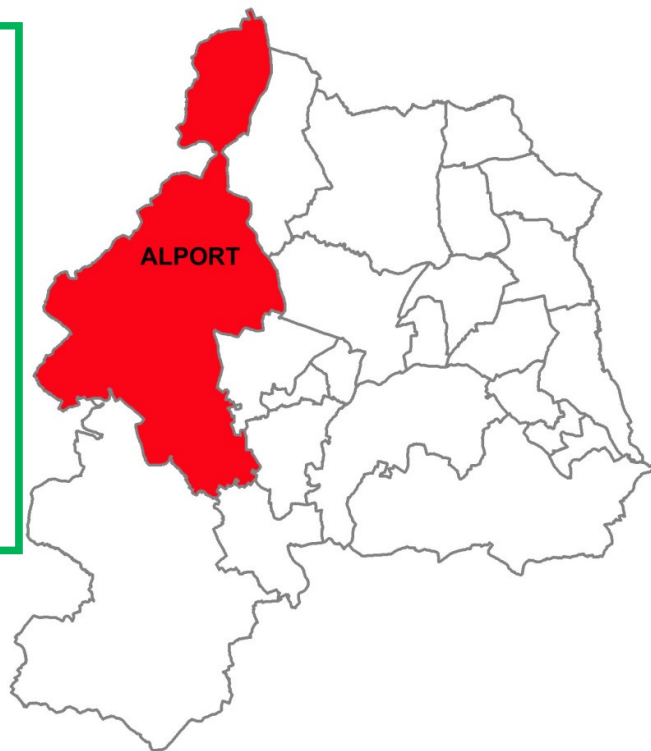
**Population:** 2485

**Hectares:** 5323

**Households:** There are 1,074 households in the area.

**Population Density:** 0.5 people/hectare

**Source:**  
Census 2011 - Usual Resident Population  
Census 2011 - Household Type



### Spatial Outline

The Alport area is located to the west of Amber Valley Borough, 10 miles north of Derby and 14 miles west of Nottingham. Alport is primarily a rural area with several small and large villages dispersed across its geographical boundary. It includes active farming communities and with a limited history of industry, mainly centered on quarrying. It has a very attractive and sensitive 'natural' landscape, with the eastern part of the ward protected as part of the Derwent Valley Mills World Heritage site and national and local designations to protect several sites of high environmental quality. In the past decade there has been very limited new housing and/or employment development in the Alport area as there are significant environmental constraints in the area.

## Improving Places and Meeting Community Needs

**Local Area:** Alport covers 5,323 hectares of land to the west of the Borough. It is the largest administrative area in Amber Valley, occupying 20% of the Borough's land area.

### **Population:**

**Figure 1: Population**

<i>Alport Ward</i>		
<i>Parish</i>	<i>Population</i>	<i>Density (people/ha)</i>
<i>Dethick, Lea and Holloway</i>	1,027	1.2
<i>Alderwasley</i>	469	0.4
<i>Ashleyhay</i>	118	0.2
<i>Idridgehay &amp; Alton</i>	275	0.4
<i>Shottle &amp; Postern</i>	266	0.2
<i>Hazelwood</i>	330	0.7

Source: 2011 Census - Usual Resident Population

**Population Density:** The Population density of the area varies from one Parish to the next, but the average of 0.5 people/hectare, is the lowest in the Borough. This is significantly lower than the Borough average of 4.5 people/hectare. Most of its population is concentrated in the village of Holloway and to a lesser extent in the smaller villages/settlements of Lea, Hazelwood, Idridgehay and Alderwasley.

**Age:** As can be seen from the table below the age of Alport's residents tends to be older than the average for the Borough.

**Figure 2: Age of Population**

	<i>Alport</i>		<i>Amber Valley</i>	
<i>Age</i>				
<i>18 – 29 years</i>	168	6.8%	15340	12.5 %
<i>30 – 59 years</i>	972	39.1%	50381	41.2 %
<i>60 – 74 years</i>	636	25.6%	21975	17.7%
<i>75 + years</i>	280	11.3%	10283	8.4%

Source: 2011 Census

**Nationality:** The majority of the ward population was born in England followed by elsewhere outside the EU.

**Ethnicity:** The people living in Alport are predominantly White (98.5%) (source – Census 2011) with a small but diverse proportion of ethnic minorities residing in the area.

**Households:** There are 1,074 households in the area.

**Household Composition:** The majority of people in the ward are married with non dependent children followed by a high number of pensioners compared to the rest of the Borough, there is a stark difference between the ward and borough averages.

**Figure 3: Household Composition**

<i>Type of Household</i>		<i>Alport</i>		<i>Amber Valley</i>	
	Total Households	1074	100%	52596	100%
<b>1 person h/holds</b>	1 person Aged 65 and over	149	13.9%	6718	12.8%
	1 person other	108	10.0%	7940	15.1%
<b>One Family only households</b>	All aged 65 and over	184	17.1%	5047	9.6%
	Married couple, no children	227	21.1%	8049	15.3%
	Married couple, dependent ch	154	14.3%	8063	15.3%
	Married couple all ch non dep	62	5.8 %	3289	6.3 %
	Civil Partnership Couple, no ch	0	0%	73	0.1%
	Civil Partnership Couple, dependent ch	0	0%	11	0.02%
	Civil Partnership Couple, non dep ch	0	0%	1	0%
	Cohabiting couple, no children	51	4.7 %	3351	6.4 %
	Cohabiting couple, dependent ch	24	2.2 %	2472	4.7 %
	Cohabiting couple, non dep ch	4	0.4 %	310	0.6 %
	Lone parent with dep children	35	3.3%	3039	5.8 %
	Lone parent with non dep ch	23	2.1 %	1776	3.4%
<b>Other h/holds</b>	With dependent children	15	1.4 %	870	1.7 %
	All student	0	0 %	0	0%
	All aged 65 and over	10	0.9%	136	0.3%
	Other	28	2.6 %	1451	2.8%

Source: Census 2011 – Household Composition

### Service Provision

**Shopping Services:** There is a low retail provision with only a small number of local shops for convenience and comparison-shopping, mainly in larger villages like Idridgehay and Holloway. Larger shops are accessible at Wirksworth, Belper and Matlock.

**Major Food Store: 0**

Nearest major food store is Morrison's, Belper.

**Market: 0**

Nearest markets are at Ripley, and at Wirksworth where monthly farmer's markets are also held.

**Post Offices: 1**

Mayfield Stores, 7 Church Street, Holloway.

Further post offices accessible at Belper, Wirksworth and Crich.

**Pharmacy: 0**

Nearest are in Crich, Belper and Wirksworth.

**Dentists: 0**

Nearest is in Wirksworth

**GP Surgeries: 2**

Crich Medical Practice, Mill Lane, Holloway. Further GP surgeries at Wirksworth and Belper.

**Community Clinics: 0****A&E Hospital: 0**

Nearest is Derby Royal, to the south and Chesterfield Royal to the North-East.

**Hospital: 0**

Nearest Ripley Hospital, Whitworth Hospital at Matlock and Clay Cross Community Hospital

**Opticians: 0**

Nearest are in Belper, Duffield, Wirksworth and Matlock

**Infant School: 0****Junior School: 0****Primary School: 1**

Lea Primary School

**Secondary School: 0**

Hazelwood is in the catchment area for Ecclesbourne School, Duffield. Lea & Holloway are in the catchment area for Highfeld's School, Matlock. Alderwasley, Ashleyhay, Idridgehay and Shottle and Postern are in the catchment area for Anthony Gell School, Wirksworth.

**Special School:**

Alderwasley Hall – school for children of all ages with speech and language difficulties.

**Colleges: 0****Universities in the Locality:**

University of Derby

**Places of Worship: 7**

St James, Cliffash Lane, Idridgehay  
Street Lane Methodist, Street Lane, Street Lane  
All Saints, off Higg lane, Alderwasley  
St John the Baptist, Dethick  
St John the Evangelist, Hazelwood  
Christ Church, Church Street, Holloway  
Trinity Methodist, Church Street, Holloway

**Child Care:**

Childminders: 2  
 Toddler Group: 2  
 School Club: 1

Play Group: 1. A play group has started at Ildridgehay church, and further playgroups / nurseries are accessible in the area at Belper, Ambergate, Wirksworth and Matlock.

**Sure Start:** 0

**Job Centres:** 0

Nearest: Belper

### Safer Communities

The incidence of crime in Alport is very low as with most rural settlements in Amber Valley. The Alport area has one of the lowest crime rates in the Borough.

**Crime Rates:** The level of crime in Alport is well below average. Within a 12 month period (June 12- May 13) the number of crimes committed per 1,000 people was 23.3 compared to the Borough average of 43.3 / 1,000 population. It is ranked the seventh lowest crime area in the Borough. Nearly 70% of these crimes involved non-domestic burglary and stealing.

**Figure 4: Crime Rates**

<i>(Rate/1000)</i>	<i>Alport Area</i>	<i>Amber Valley</i>	<i>Area Rank (23=lowest)</i>
<b><i>Anti Social Behaviour</i></b>	4.5	40	22 <sup>nd</sup>
<b><i>Criminal damage / arson</i></b>	1.2	8.0	22 <sup>nd</sup>
<b><i>Theft / burglary</i></b>	20.9	23.6	9 <sup>th</sup>
<b><i>Violence with injury</i></b>	0.8	4.0	22 <sup>nd</sup>
<b><i>Violence without injury</i></b>	0	3.2	N/A
<b><i>Public disorder</i></b>	0.4	0.61	14 <sup>th</sup> (of 20)
<b><i>Shoplifting</i></b>	0	4.2	N/A

Source: Safer Derbyshire Research & Information Team, Derbyshire County Council

**Fire and Accidents:** The fire and rescue services attended 18 incidences of fire in the area between 2002-2006 accounting for 2.1% of the Borough's total within the same period.

## Housing

### House Prices and Affordability:

**Figure 5: House Affordability**

Borrowing ratio 95% house price to average income	9.27	
New homes built since September 2001	309	25.4% (data as % for area)
Affordable development since 2005 (rented, shared ownership and AVBC property appreciation loan scheme)	-	

Source: CACI Community Insights 2009

**Figure 6: Average House Prices**

<i>Area</i>	<i>Detached</i>	<i>Semi-detached</i>	<i>Terraced</i>	<i>Flat / maisonette</i>	<i>Average</i>
<i>Holloway and Lea</i>	£384,650	£190,256	£163,510	-	£276,250
<i>Hazelwood *</i>	£707,523	£288,415	£138,779	-	£582,434
<i>Amber Valley</i>	£215,252	£124,346	£104,202	£100,250	£151,179

Source: Amber Valley figures <http://news.bbc.co.uk/> based on Jan-Mar 2012 sales.

Source for others: <http://www.zoopla.co.uk> showing average current value

The average house price in this rural area is significantly higher than the Borough average.

### Homelessness:

In the financial year 2011/12 there was one priority need applicant from the Alport area, and a further 3 applicants approaching the service for advice. .

**Housing Stock Condition:** The Amber Valley Stock Condition Survey 2010 states that the general condition of housing is poorer in Alport than the average condition of houses Borough wide. This is largely due to the historical nature of many of the dwellings, which although desirable are often not energy efficient and in need of insulating / repairs.

There are nearly twice as many households (percentage) lacking modern facilities and dwellings in disrepair than the Amber Valley average, but only a third of the percentage of vulnerable households in non-decent homes.

**Figure 6: Amber Valley Housing Stock Condition Survey 2010**

<i>Area</i>	<i>% Of non-decent homes</i>	<i>% Of households lacking modern facilities</i>	<i>% Of households lacking thermal comfort</i>	<i>% Of households vulnerable households in non-decent homes</i>	<i>% Of total dwellings in disrepair</i>
<b>Alport</b>	57%	1.90%	23%	10%	28%
<b>Amber Valley</b>	37%	1%	15%	31%	15%

Source: Amber Valley Stock Condition Survey 2010

**Tenure:** As can be seen from the table below the majority of the local population own their own property this is on par with the Borough. However more people currently privately rent in Alport than socially rent.

**Figure 7: Tenure**

<i>Type of Tenure</i>	<i>Alport</i>	<i>Amber Valley</i>
<b>All</b>	100%	100%
<b>Owned (outright)</b>	55.6%	38.2%
<b>Owned (mortgage/loan)</b>	25.9%	35.9%
<b>Shared ownership</b>	0.9%	0.4%
<b>Social rented (LA)</b>	2.0%	5.1%
<b>Social rented (other)</b>	3.1%	7.2%
<b>Private rent</b>	10.8%	11.8%
<b>Living rent free</b>	1.8%	1.4%

Source: 2011 Census

**Type:** The majority of dwellings are detached followed by semi-detached and terraced housing.

**Age of housing stock:** The age profile of the 47,390 owner occupied and privately rented stock in Amber Valley was different to the national average with significantly higher proportions of dwellings built pre 1919 (30.6% compared with 24.6%) and slightly larger proportions built just post war (17.8% compared with 16.9%) and between 1965- 1980 (21.6% compared with 20.4%). The proportion of dwellings built in the inter war period was significantly lower than nationally (12.9% compared with 18.1%)

Source: Amber Valley Borough Council Private sector Housing Condition Survey March 2010.

**Communal Establishments:** At 2011 there were 7 communal residents with approximately 41 Alport residents residing in communal establishments.

**Vacant Properties:** At October 2012 there were 29 private sector vacant properties, 2.52% of the private housing stock.

**Local Plan:** No dwellings were allocated in the Alport area in the adopted Amber Valley Local Plan (2006). A couple of potential sites have been identified in the Strategic Housing Land Availability Assessment (SHLAA) for Amber Valley.

**Ward Building Rates:** Between 2008 and 2013 a total of 20 dwellings were built this is 1.6% of the total built over the last five years in the Borough.

**Figure 8: Ward Building Rates**

<b>FIVE YEAR HOUSING LAND SUPPLY WARD BUILDING RATES</b>						
<b>Area</b>	<b>2008 – 2009</b>	<b>2009 – 2010</b>	<b>2010 – 2011</b>	<b>2011 – 2012</b>	<b>2012 – 2013</b>	<b>TOTAL</b>
<b>Alport</b>	2	4	11	2	1	20
<b>Amber Valley</b>	334	214	256	206	219	1229

Source: Amber Valley Borough Council house building records

**Total Dwellings:** The 2011 Census showed Alport has 1,173 dwellings. This a 9.5% increase from 2001 Census.

### Healthier Communities

**Multiple Deprivation:** The Index of Multiple Deprivation (IMD) published by the government in 2010 indicates that Alport is one of the 25% least deprived in Amber Valley and is ranked within the least deprived 33% in England. The rank with the lowest scores was 'Barriers to Housing and Services'.

**Life Expectancy:** Local people in the Alport area have an above Borough and regional average life expectancy.

**Figure 9: Life Expectancy**

<b>Life Expectancy: 2003-07</b>	<b>Males</b>	<b>Females</b>
<b>Alport</b>	81.4	85.6
<b>Amber Valley</b>	78.1	82.1
<b>East Midlands</b>	77.2	81.3

Source: Public Health England, using SEPHO life expectancy calculator

**General Health:** The proportion of people in Alport who consider their health to be good or very good (81.2%) is higher than the Borough average of 79%, while the proportion of people who consider they have very bad health is much lower than the Borough average. The 2011 Census indicates that there were 98 people in Alport who considered their health to be bad or very bad.

**Figure 10: General Health**

<b>Percentages</b>	<b>Alport</b>	<b>Amber Valley</b>	<b>East Midlands</b>	<b>England</b>
<b>All People</b>	100%	100%	100%	100%
<b>Very Good Health</b>	47.4	44.0	45.3	47.2
<b>Good Health</b>	33.8	35.0	35.1	34.2
<b>Fair Health</b>	14.9	15.0	14.0	13.1
<b>Bad Health</b>	3.4	4.8	4.3	4.2
<b>Very Bad Health</b>	0.5	1.3	1.2	1.2

Source: 2011 Census

The children in Amber Valley are more physically active than the average for the UK based on them participating in two hours physical activity a week.



**Figure 11: Physical Activity**

	<b>Amber Valley</b>	<b>England Average</b>	<b>England Worst</b>	<b>England Best</b>
<b>Physically Active Adults</b>	10.7	11.6	5.4	16.6
<b>Obese Adults</b>	29.9	24.2	32.8	13.2
<b>Physically Active Children</b>	55.7	49.6	24.6	79.1
<b>Obese Children</b>	9.8	9.6	14.7	4.7

Source: Health Profile 2010 Amber Valley

**Economic Prosperity**

**Figure 14: Average Income**

<b>MEAN</b>	<b>MEDIAN</b>	<b>MODE</b>
£35,012	30 - 35k	20 - 25k

Source: Paycheck CACI 2008.

There are three calculations above identifying the average annual income for the residents of Alport.

**Mean Income-** The mean is the most common measure of average.

**Median Income-** The median is the *middle number*. To calculate the median of any set of numbers, you need to write the numbers *in order*

**Mode-** The mode is the number, which occurs *most often* in a set of data. There can be more than one mode.

This can be further examined as the following:

0-5k	5-10k	10-15k	15-20k	20-25k	25-30k	30-35k
2%	5%	8.9%	11.1%	11.6%	11%	9.7%

Sourced from Paycheck CACI 2008.

At 2009, 59.3% of all Alport households have an income that is up to £35,000: the average (mean) income being £35,012. In 2004 this figure was 65.9% of Alport households, in 2006 it was 57.2%. The mean income for 2008 is lower than for 2006.

**Retail Offer:** There is a low provision of retail offer in Alport. There are only a few local shops that provide convenience and comparison shopping opportunities for local people in the various settlements in the area.

**Employment Areas:** There are no designated or proposed employment areas in Alport.

**Local Industries:** The manufacturing industry is the major employer in this area, accounting for 14.3% of persons employed. Education is the second largest employer in the area accounting for 12.2% of persons employed. The wholesale and retail industry (11.7%) and human health and social work activity industries (10.1%) are also major employers. The Agriculture sector has declined since the 2001 Census, dropping from 10% to 7.6%, now lower than the construction sector (7.9%). (Source – 2011 Census)

**Unemployment:** In March 2013 the average rate of unemployment in the area was 0.4%, which was lower than the Borough average of 3.0%. The rate of unemployment has decreased from 1.2% in March 2012.

(Source: Derbyshire County Council, Research & Information Team - Monthly Unemployment Statistics)

**Benefits:** At November 2012 there was a smaller proportion of the Alport population compared to the Borough population claiming benefits.

**Figure 15: Benefit Claimants**

(Percentages)	Alport	Amber Valley	Great Britain
<i>Total claimants</i>	6.8	12.8	14.1
<i>Job seekers</i>	1.4	2.8	3.6
<i>ESA and incapacity benefits</i>	2.7	5.7	6.3
<i>Lone parents</i>	0.0	1.0	1.3
<i>Carers</i>	0.7	1.4	1.3
<i>Others on income related benefits</i>	0.3	0.4	0.4
<i>Disabled</i>	1.4	1.2	1.1
<i>Bereaved</i>	0.3	0.2	0.2

Source – Nomis November 2012

**Economic Activity:** The 2011 census showed that economic activity in the area was 66.4%, lower than the Borough (and England) average of 69.9% and East Midlands average of 69.3%.

**Occupation:** The majority of the local populations are employed within Professional positions followed by Managers, Directors and Senior Officials and skilled trades. The percentage of people employed in these professions is much higher than the average for the Borough or the rest of the country.

**Figure 16: Occupation**

(Percentages)	<i>Alport</i>	<i>Amber Valley</i>	<i>England</i>
<b>1 Managers, Directors, Senior officials</b>	17.8	10.6	10.9
<b>2 Professional</b>	20.9	15.2	17.5
<b>3 Associate professional &amp; technical</b>	9.6	11.3	12.8
<b>4 Administrative &amp; secretarial</b>	11.4	10.9	11.5
<b>5 Skilled trades</b>	15.5	12.1	11.4
<b>6 Personal services</b>	5.7	9.5	9.3
<b>7 Sales and customer services</b>	4.8	8.4	8.4
<b>8 Process plant and machine operatives</b>	6.4	9.3	7.2
<b>9 Elementary occupations</b>	7.9	12.7	11.1

Source: 2011 Census

**Qualifications:** At 2011 38% of the Alport population had attained level 4 qualifications or higher compared to 23.2% of the Borough population.

(Percentages)	<i>Alport</i>	<i>Amber Valley</i>	<i>England</i>
<b>Usual Residents Aged 16 and over (Persons)</b>	2,124	100,841	42,989,620
<b>No Qualifications</b>	20.9	27.0	22.5
<b>Level 1 Qualifications</b>	9.9	13.9	13.3
<b>Level 2 Qualifications</b>	13.7	15.5	15.2
<b>Apprenticeships</b>	4.3	4.6	3.6
<b>Level 3 Qualifications</b>	10.1	12.0	12.4
<b>Level 4 Qualifications</b>	38.0	23.2	27.4
<b>Other Qualification</b>	1.4	3.9	5.7

Source: 2011 Census

## Transport

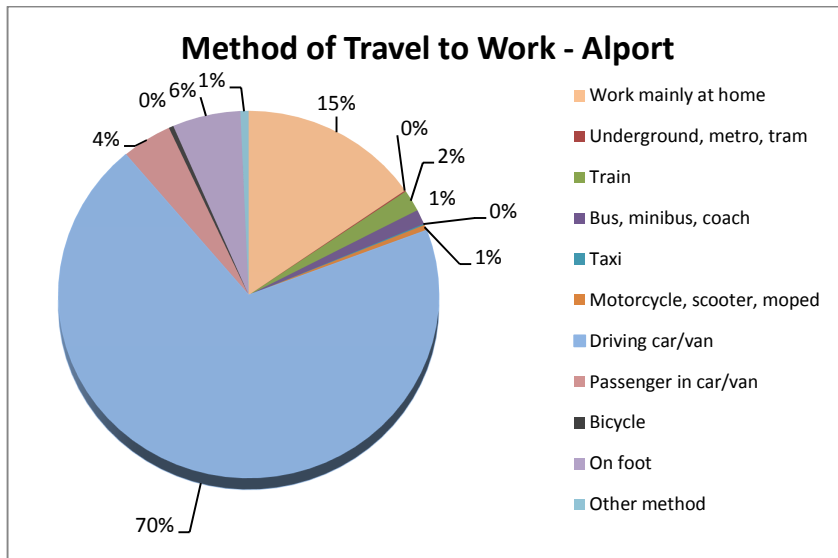
**Transport Infrastructure:** The area is sparsely linked to other communication corridors via the A6 running across the eastern edge of the area, linking Derby with Matlock, Peak District, Manchester and the northwest. The A615 also runs East-West along its far northern boundary and A517 in its southern boundary. The area is also served in the west by the B5023 road and also by several minor roads.

**Cycle Routes:** The infrastructure to support sustainable modes of transport such as cycling, walking and other non-motorised transport has not been extensively developed in Alport. There is however a proposed multi user route that will introduce such infrastructure and help improve connections with other places in the Borough.

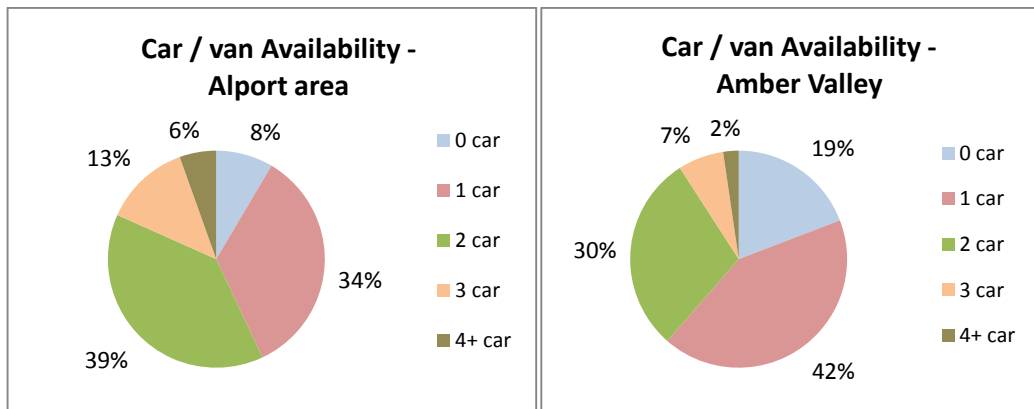
**Method of Travel to Work:** At 2011 the majority of the Alport population travelled by car/van to their place of employment. Over 15% of people worked mainly from home, three times the Borough and national average and the percentage walking to work is nearly half the national average. This is probably due to the rural nature of the Ward.

(Percentages)	Alport	Amber Valley	England
<b>Usual Residents Aged 16 – 74 in employment (Persons)</b>	1,196	59,381	25,162,721
<b>Work mainly at home</b>	15.4	5.1	5.4
<b>Underground, metro, tram</b>	0.1	0.1	4.1
<b>Train</b>	1.9	1.2	5.3
<b>Bus, minibus, coach</b>	1.3	4.1	7.5
<b>Taxi</b>	0.1	0.3	0.5
<b>Motorcycle, scooter, moped</b>	0.5	1.0	0.8
<b>Driving car/van</b>	69.6	71.0	57.0
<b>Passenger in car/van</b>	4.3	5.6	5.0
<b>Bicycle</b>	0.4	1.4	3.0
<b>On foot</b>	5.8	9.7	10.7
<b>Other method</b>	0.7	0.4	0.6

Source: 2011 Census

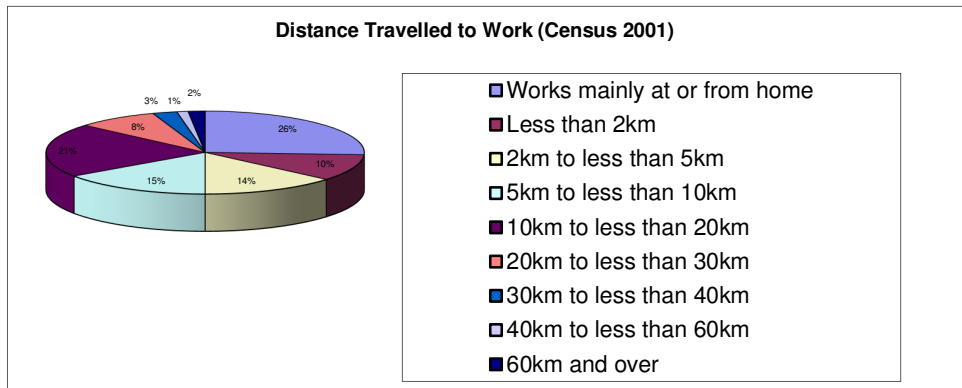


**Car Availability:** Car/van availability in the area is high (92% own one car or more), compared to an average of 81% in Amber Valley. This could be attributed to the fact that Alport is a fairly rural area.



Source: 2011 Census

**Distance Travelled to Work:** At 2001 the majority of the Alport population worked from home followed by travelling between 10km and 20km to their place of employment.



Source 2001 Census

**Community Transport:**  
**Figure 18: Community Transport Timetable**

Service	Route	Frequency
DAB 9	Idridgehay/Ireton Wood- Windley-Hazelwood & Shottle.	Weekly
DAB 16A	Holloway- Lea- Matlock-Tansley, Wirksworth	Weekly
DAB18	Lea-Holloway-Dethick-Tansley-Riber-Starkhomes-Matlock	Weekly
Derby W	Shottle-Windley-Blackbrook-Kirk Ireton-Irewood-Duffield-Turnditch- Hazelwood- Cowers Lane- Quarndon.	Fortnightly

Source: Derbyshire County Council

**Public Transport:** The residents of Alport have relatively poor access to public transport, with buses serving some main roads hourly or two hourly..

**Figure 19: Bus Timetable for Alport**

Service	Route	Frequency
6.1	Derby, Belper, Cowers Lane, Idridgehay, Matlock, Bakewell (Trent Barton)	Hourly
109	Derby, Cross o'th' Hands, Hulland Ward, Ashbourne (Arriva)	Every two to three hours
113	Belper, Hazelwood, Cowers Lane, Turnditch, Hulland Ward, Ashbourne.(Glovers)	Every two hours
140	Alfreton, Crich, Holloway, Lea, Cromford, Matlock (Yourbus)	Hourly
141	Ripley, Crich, Holloway, Lea, Cromford, Matlock (Yourbus)	Hourly
150	Clay Cross • Alfreton • Wessington • Tansley • Matlock (DW Coaches)	Every two hours

Source: Derbyshire County Council 2013

**Location of Work:** A large number of people commute to nearby Derby City for employment. People also commute to Derbyshire County Council Offices in Matlock and also to Wirksworth, which is more accessible for people living in the west of the area.

**Accessibility:** A collection of six essential service destination types have been identified to reflect those discussed in the Social Exclusion Unit Report (2003)- Making the Connections. The DfT Accessibility Indicators Report (2007) sets out the core indicators thresholds for each destination type.

**Figure 20: Identified in the table below are the journey times to key services.**

Key Destination	Journey Time Thresholds (mins)*	
	Lower	Upper
GP Surgery	15	30
Pharmacy	15	30
Post Office	15	30
Primary School	15	30
Secondary School	20	40
Supermarket/ Convenience Store	15	30

**Figure 21: Travel Times to Key Destinations**

	Doctors Surgery	Pharmacy	Post Office	Primary School	Secondary School	Supermarket
Travel Time Access by Cycle mins (16kph)	7.3	7.6	7.3	7.5	18	7
Travel Time by Foot mins (4.8kph)	36.5	25.6	37	24.5	61	39
Travel Time Access by Public Transport mins (weekday 0700-0900)	21.75	20.2	19.35	17.9	33.3	15.25

Average travel times Alport (Measurement of Existing Accessibility- Amber Valley SHLAA Sites) August 2009

The residents of Alport have relatively good access to services when travelling by bike, as the travel times all fall within the lower travel time thresholds set out by the Department for Transport 2007. However to travel to the nearest secondary school by foot will take approximately sixty one minutes which is twenty minutes over the maximum travel time set by the Dft (2007).

## Built Environment

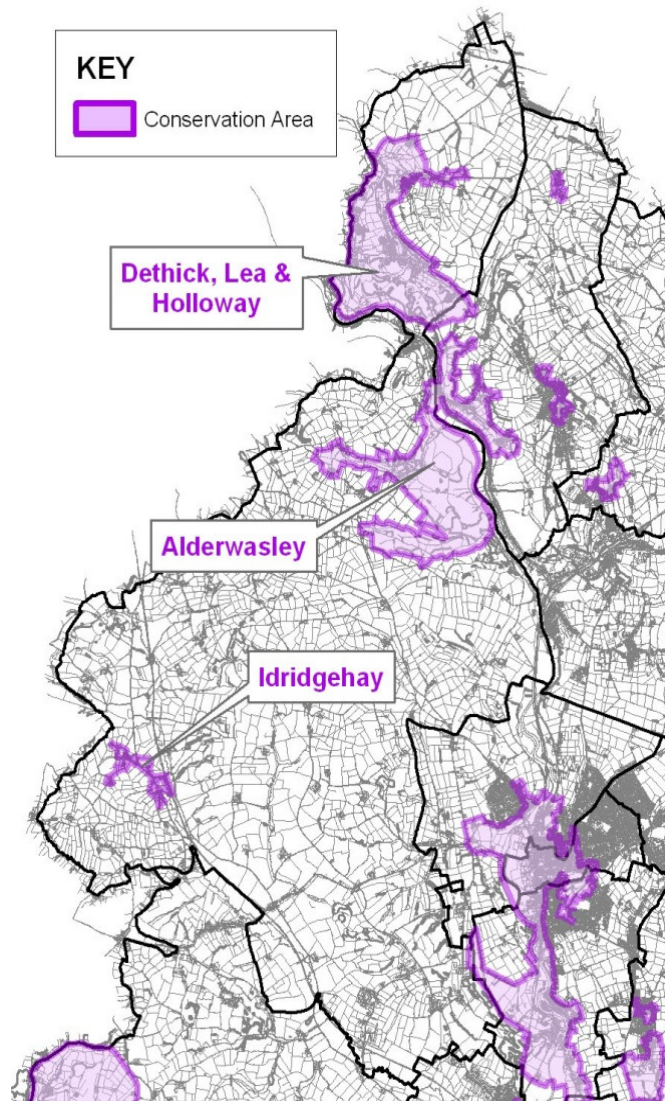
### **Designated Areas / Buildings:**

There are 3 Conservation Areas in the Alport area, covering the settlements of Dethick, Lea & Holloway, Idridgehay and Alderwasley. This is a total of 560 hectares and accounts for 10.5% of the whole Alport area and 24% of all the area within Conservation Areas in Amber Valley.

**Listed Buildings:** There are 106 listed buildings within the area (accounting for 13.9% of listed buildings in Amber Valley), statutorily designated because of their special architectural or historic importance.

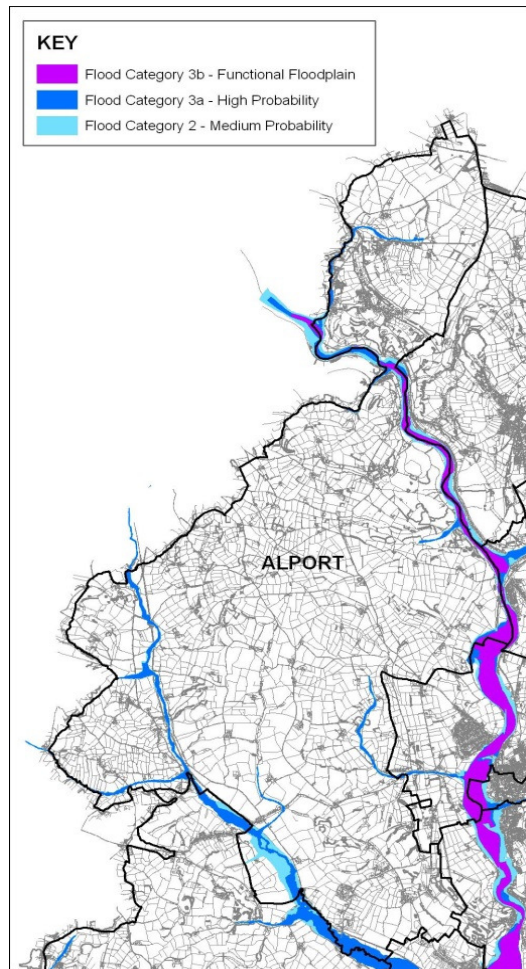
### **Landscape Character Areas:**

The Alport area falls within the Derbyshire Peak Fringe and Lower Derwent Landscape Character area. The area consists of a number of character types namely, Wooded Slopes & Valleys, Wooded Farmlands, Enclosed Moors & Heaths, Gritstone Heaths and Commons and Riverside Meadows.



**Green Belt / Designated Sites:** Approximately 79% of the area lies in the Green Belt and there are 3 SSSI's and several biodiversity assets, including 2,912 hectares of land in the designated Special Landscape Area (66% of the total SLA designation), 1 local nature reserve and 44 wildlife sites all of which are of significant local importance.

**Water and Flood Risk:** The Rivers Derwent and Ecclesbourne are the two major rivers that run through the area and there are numerous tributaries of these rivers (ordinary watercourses) that can also be found in the Alport area. According to the Amber Valley Level 1 SFRA, most areas in Alport fall within the flood zone 1 and 2 (low and medium risk zone). However, a small area around the river Derwent lies within the flood zone 3a and 3b (high risk zone). There are also several areas around River Ecclesbourne and ordinary water courses in close proximity to outlying villages in the area, which lie within flood zone 3a (high risk zone).



### Culture Arts and Tourism

The Alport area consists of several small settlements that in some cases share a similar history and culture, primarily in relation to the industrial revolution. These settlements include:

Dethick, Lea and Holloway, a civil parish to the north of Alport noted for its historic links with Florence Nightingale. Important cultural assets include The Coach House at Lea, famous for its home-made ice creams, Lea Gardens, renowned for its collection of rhododendrons and other plants and Lea Green, an 18th century stone building set in 25 acres of parkland.

Alderwasley is another settlement in Alport; it has historic links with the medieval region of Duffield Frith, with Alderwasley Hall being a particularly notable listed building. The most notable cultural asset in this area is the Shining Cliff Woods, a royal park in ancient times and now a site of special scientific importance.

Ildridgehay and Alton are small residential communities in Alport; cultural assets include the South Sitch, a two-storey cottage built in the 1600s, Alton Manor, the Black Swan and St James Church are other important physical structures built in the 1800s and listed for their architectural or historic importance.

Alport Height is a local landmark attracting visitors with its extensive views over the Derbyshire Countryside.

Ecclesbourne Valley Railway attracts an increasing number of visitors, running from Wirksworth to Duffield and stopping at Ildridgehay Station.

Ashleyhay holds a music festival every year.



## Leisure Recreation

**Recreation:** The main leisure facility in the area is Lea Green Development & Conference Centre at Lea in the north of the area. Apart from this there are very limited areas designated as spaces and/or facilities that offer leisure and recreational opportunities in Alport, except for the Birchwood Farm Caravan Park in Whatstandwell, two Children’s play areas in the settlement of Lea to the very north of the area and a football pitch and public open space in Idridgehay. There is a network of footpaths throughout the area that are much used by walking groups, locals and joggers.

**Figure 22: Recreation Sites Alport**

<i>Parks &amp; Gardens</i>	<i>Natural green spaces</i>	<i>Green Corridors</i>	<i>Outdoor Sports Facilities</i>	<i>Amenity Green space</i>	<i>Children/ Young People</i>
1	0	9	1	0	2

**Leisure Centres: 1**

**Libraries: 0**

Mobile library calls once a fortnight.

**Tourist Attraction: 0**

**Green Flag Awards: 0**

**Community Centres: 0**

Community facilities in Alderwasley and Hazelwood village halls, and in Idridgehay Church.

**Recycling Facilities: 2**

Railway Inn Ashbourne Road Cowers Lane DE56 2LF, The Bear Inn Belper Road Alderwasley DE56 2RD

**Figure 23: National Place Survey Results 2008 for Alport**

	<i>Are Important %</i>	<i>Need Improving %</i>
	Alport	Alport
<i>Access to nature</i>	60	0
<i>Health Services</i>	60	7.5
<i>Public Transport</i>	42.5	35
<i>Crime level</i>	40	10
<i>Educational Activities</i>	32.5	2.5
<i>Affordable decent housing</i>	27.5	30
<i>The level of traffic congestion</i>	27.5	17.5
<i>Clean streets</i>	25	12.5
<i>Road pavements and repairs</i>	25	42.5
<i>Community activities</i>	20	7.5
<i>Parks and Open spaces</i>	15	2.5
<i>Facilities for younger children</i>	12.5	7.5
<i>Shopping facilities</i>	12.5	12.5
<i>Job Prospects</i>	10	7.5
<i>Activities for teenagers</i>	7.5	35
<i>Sports and Leisure facilities</i>	7.5	12.5
<i>Wage levels</i>	5	7.5
<i>Cultural facilities</i>	2.5	7.5
<i>The level of pollution</i>	0	0
<i>Race Relations</i>	0	0

Source: Derbyshire Observatory 2010

The Place Survey 2010 states that the majority of people felt that health services public transport, crime level and educational activities are all-important issues in their local area. In contrast road and pavement repairs, activities for teenagers, public transport and affordable decent homes all need improving in Alport.

## The Summary

- **Housing:** Average house prices in Alport are significantly higher than the average for the Borough, but 28% of dwellings were in disrepair and a total of 20 dwellings were built between 2008 and 2013.
- **Facilities:** There is a lack of facilities in the Alport ward, however residents have good access to facilities within Belper and Crich.
- **Health:** The proportion of people who consider their health to be good or very good (81.2%) is more than the Borough average of 79%, while the proportion of people who consider their health to be very bad (0.5%) is lower than the borough average of 1.3%.
- **Retail:** There is a low provision of retail offer in Alport. There are only a few local shops that provide convenience and comparison-shopping opportunities for local people in the various settlements in the area.
- **Population:** At 2011 there were approximately 2,574 residents and 1,074 households with over 50% comprising of married couples without dependent children and people aged over 65.
- **Deprivation:** The Governments Indices of Health Deprivation and disability ranks settlements in the area within the least deprived 33% in the Borough and with the second least deprived 25% in England.
- **Transport:** The ward is poorly served by public transport and is sparsely linked to other communication corridors via the A6 running across the eastern edge of the area, linking Derby with Matlock, Peak District, Manchester and the northwest. The A615 also runs East-West along its far northern boundary and A517 in its southern boundary. The area is partly served by the B5023 road and several minor roads.
- **Crime:** The incidence of crime in Alport is very low as with most rural settlements in Amber Valley. The Alport area has one of the lowest crime rates in the Borough.
- **Employment:** In March 2013 the average rate of unemployment is lower than the Borough average. The local population tends to be in managerial, senior and professional positions.
- **Built Environment:** There are 106 listed buildings within the area. Approximately 79% of the area lies in the Green Belt, 10.5% lies within a conservation area and there are 3 SSSI's. There are several biodiversity assets including 2,912 hectares of land in the designated Special Landscape Area.